

INSPECTION INFORMATION

Client	
Supplier	
Factory	
P.O. NO.	N/A
Inspection Instruction	
Inspection Date	
Inspection Location	SHANGHAI, CHINA
Product Description	Used Excavator (Komatsu PC400-8)

PRODUCT INFORMATION



INSPECTION RESULT SUMMARY

Category	Conform	Not Conform	Pending
1.Quantity & Packing Condition			X
2.Visual Check			X
3.Specification & Document Check			X
4.Field Test	X		
OVERALL CONCLUSION	PENDING for client's evaluation		
Final Decision	Client has the final decision to reject or approve		

Approved by HQT Supervisor:

This report reflects the facts as recorded by HQT at the time and place of inspection. It does not relieve the manufacturers from their contractual obligations nor prejudice client's right for compensation for any apparent and/or hidden defects not detected during our random inspection or occurring thereafter.

SPECIAL ATTENTION POINTS (SAP)	
1	No instruction manual and other spare parts were found.
2	The product was placed outdoors without any protective measures.
3	No production date was found on the product nameplate.
4	Due to the limited site conditions (relatively small space), the actual excavation operation test could not be realized

INSPECTION SUMMARY		
1. Quantity & Packing Condition		
CHECK POINTS	RESULT	COMMENT
The required machine(s) and/or parts available on inspection spot	Conform	
Spare Parts and Accessories	Pending	Refer to SAP 1
2. Visual Inspection		
CHECK POINTS	RESULT	COMMENT
2.1 Appearance		
Free of rust, scratch, abrasion mark, bump, Press mark, damage, crack, broken, split, Oxidation, deformation, sharp edge, sharp corner, flash, spur and dent.	Pending	Rust, scratch, abrasion mark, damage, broken defect. Refer to product view photos
Free of Color deviation, deformation, warpage, twist, Flow mark, Short shot, Shrinkage, Weld line, White mark, white texture	Pending	Deformation defect. Refer to product view photos
Corrosion, Lebris, Organic substances, Oil Contamination, Dust,.....	Pending	Corrosion, Dust defect Refer to product view and defect photos
Painting is good condition, without peeling off, air bubble, impurity inside, discovering etc.	Pending	Poor painting and dirty mark defect, Refer to product view photos
2.2 Warning sign		
Movable Components, Mechanical Hazard, Electric Hazard, Thermal Hazard, Chemical Hazard.	Conform	
2.3 Emergency Stop		
Efficiency, Sign Label, Convenience of Operation...	Conform	
2.4 Name plate		
Date of Production, Identity NO.	Conform	
Power supply; manufacturer, Supplier or distributor name	Conform	
Product description; Model No.	Conform	
3. Specification & Document Check		
CHECK POINTS	RESULT	COMMENT
Order information	Conform	
Product specification	Conform	
Instruction manual Introduction and Maintenance Manual in both the import country and the export country's language, Diagram...	Pending	No instruction manual was provided by the factory.
Other information:	Conform	

Quality Certificates for the entire machinery.	Pending	No quality certificate was provided by the factory.
Self-exam record Ex-factory Test Report, Imported Material or Components Test Report, On-site Check Record...	Pending	Not any report was provided by the factory.
Warranty Clause in contact or confirmed by factory	Conform	
4. Field Test		
CHECK POINTS	RESULT	COMMENT
4.1 Assembly Check		
Construction		
Physical Damage, Stability, Reliability, Enabling Device, Protection Device...	Conform	
Major components		
Energy Supply, Cooling System, Lubrication System, Pneumatic System...	Conform	
Transmission System		
Belt, Chain, Gear, Pulley...	Conform	
Electronic and Electric parts		
Insulation, Wiring, Required Components, Switch...	Conform	
4.2 Operation and Function		
Sensing the operation		
Sound, Smoke, Vibration, Rattle, Smell, Engagement of gear, Heat...	Conform	
Functional operation		
Designed Functions, Protective functions, Synchronization and consistency...	Conform	
Monitor and indicator		
Information Readability, Correctness of signal translation...	Conform	
Imitative trial		
A Practical Imitation under a permit of the manufacturer. Agreement and Arrangement in advance.	Conform	
Check and evaluate the produced product according the specification or general requirement	Conform	

No.	Name of Machine	Q'ty	Brand	Type/ Model No.	Serial No.	Name of Manufacture	Country of Origin	Year of Mfg
1	Komatsu PC400-8	1	Komatsu	PC400-8		Komatsu	JAPAN	-

PHOTO ATTACHMENT



1 Product view



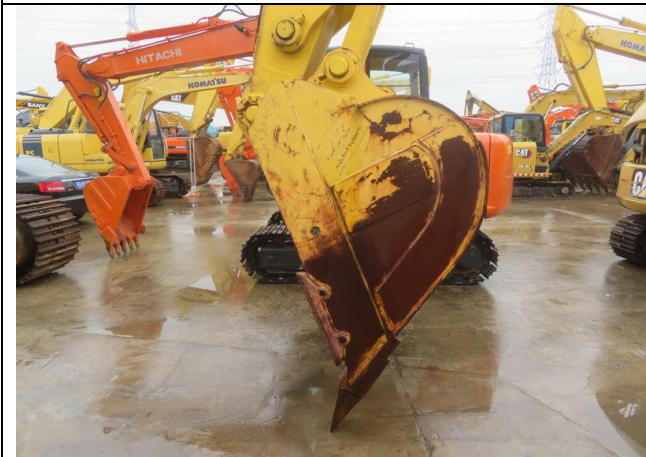
2 Product view



3 Product view



4 Bucket



5 Bucket



6 Bucket



7 Product view



8 Product view



9 Product view



10 Light



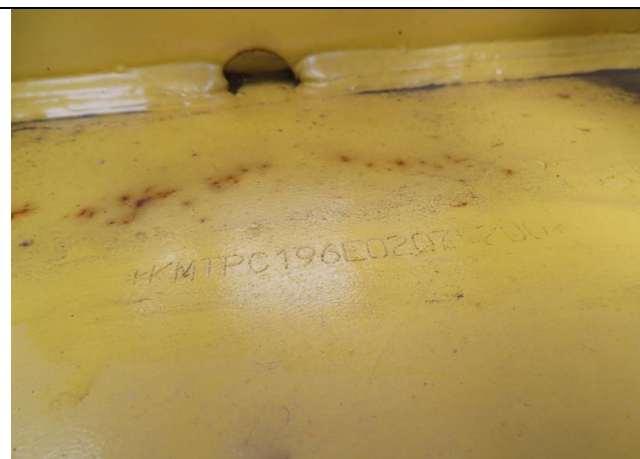
11 Product view



12 Product view



13 Name plate



14 Product view



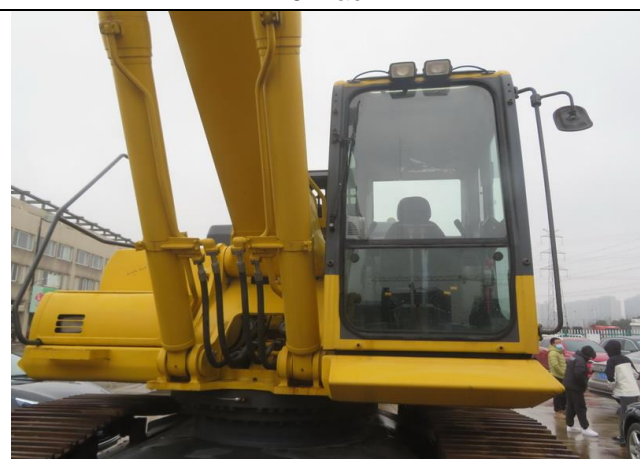
15 Track



16 Track



17 Product view



18 Product view



19 Product view



20 Product view



21 Product view



22 Track



23 Product view



24 Product view



25 Product view



26 Product view



27 Product view



28 Track



29 Track



30 Light



31 Product view



32 Product view



33 Product view



34 Product view



35 Product view



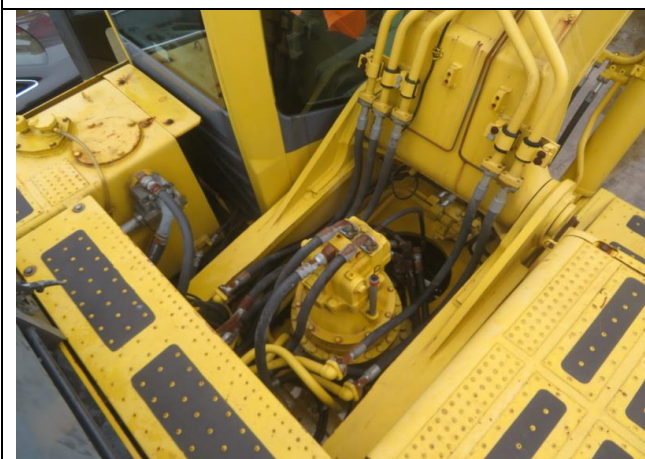
36 Product view



37 Product view



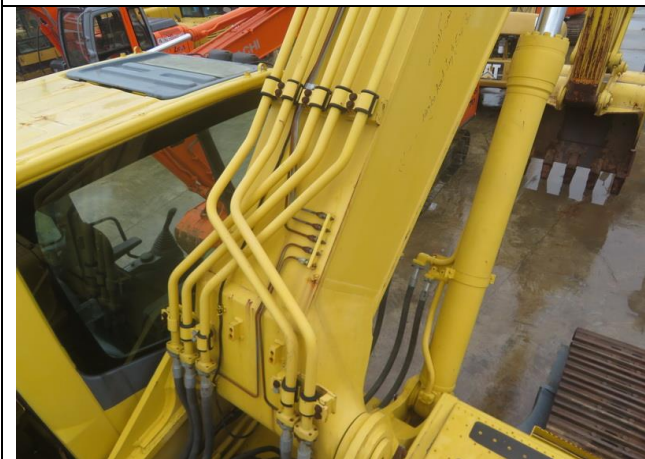
38 Product view



39 Product view



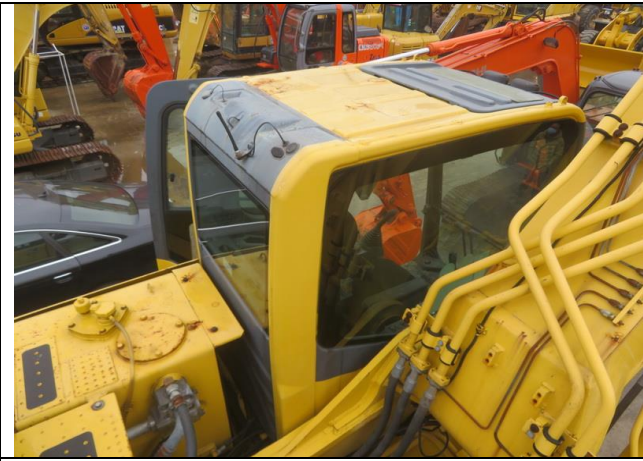
40 Product view



41 Product view



42 Product view



43 Product view



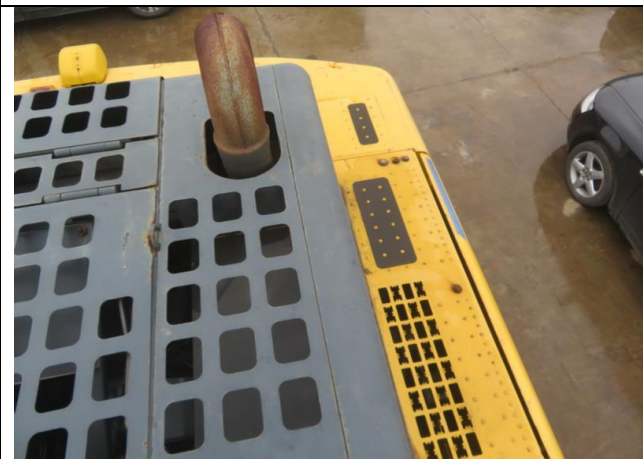
44 Product view



45 Product view



46 Product view



47 Product view



48 Product view



49 Product view



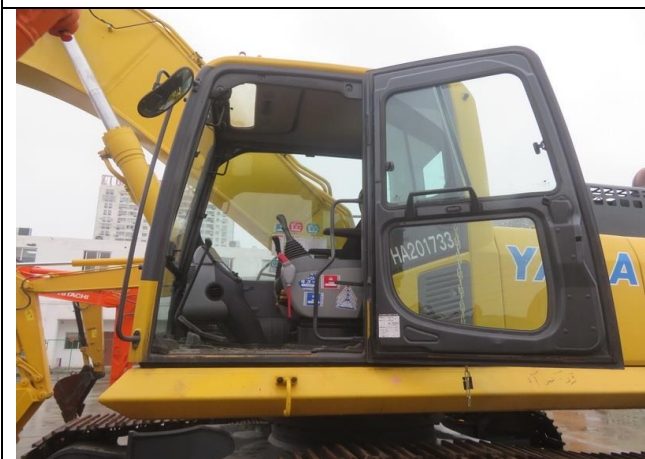
50 Product view



51 Product view



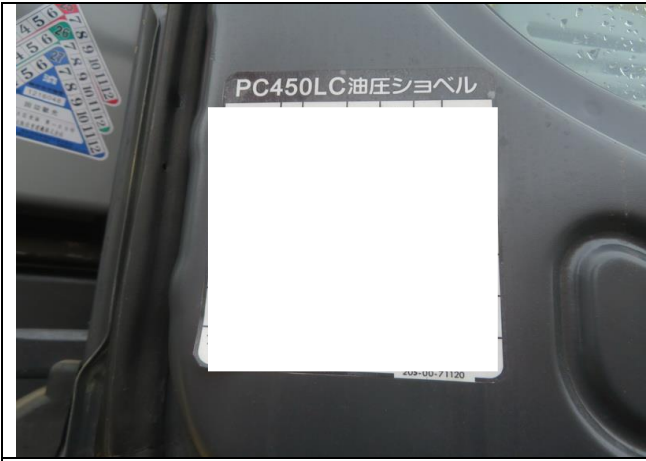
52 Product view



53 Product view



54 Product view



55 Product view



56 Product view



57 Product view



58 Steering and drivetrain controls



59 Product view



60 Product view



61 Hour meter



62 Steering and drivetrain controls



63 Product view



64 Product view



65 Product view



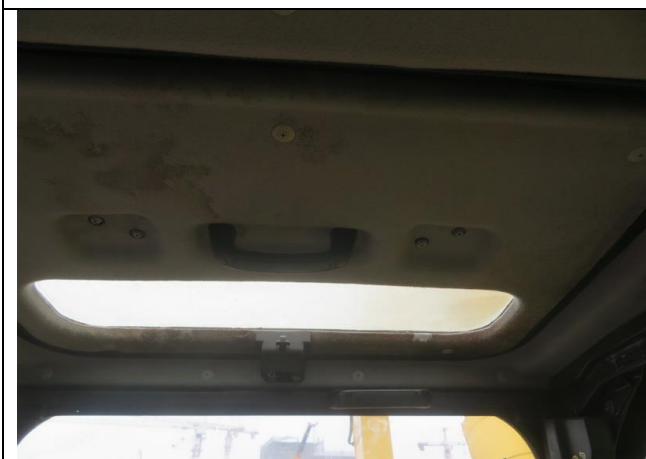
66 Product view



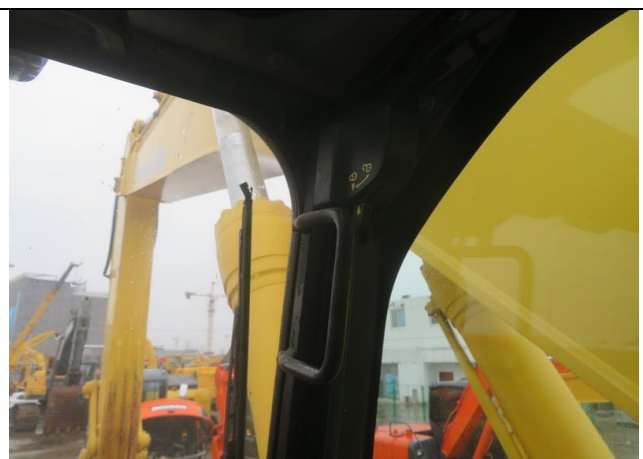
67 Product view



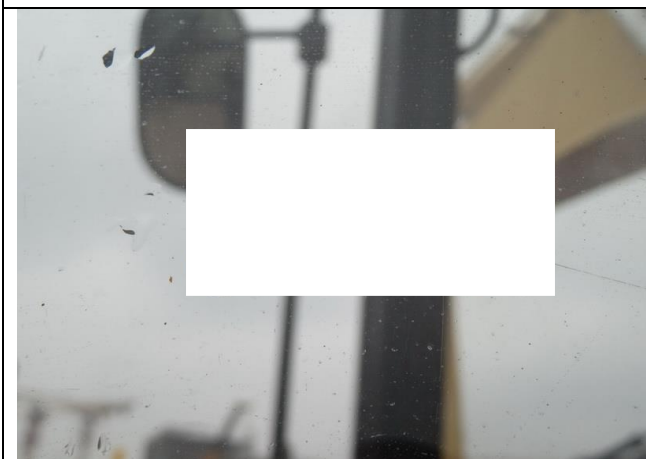
68 Product view



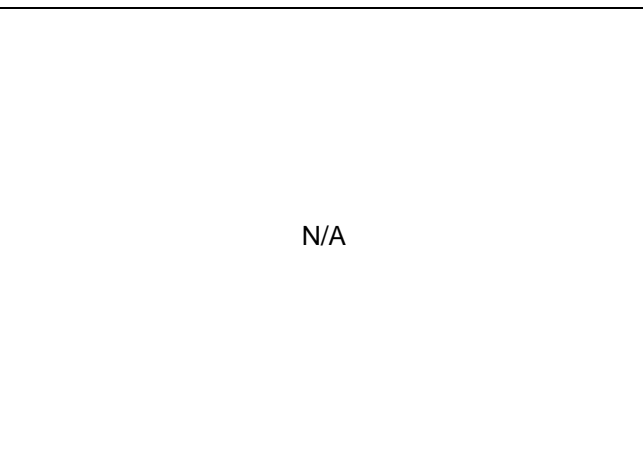
69 Product view



70 Product view



71 Product view



N/A

Inspector:		Auditor:	
-------------------	--	-----------------	--

End of Report